



PEOPLE // FEB 26, 2020

Our Saarbruecken Challenge – Phase 1

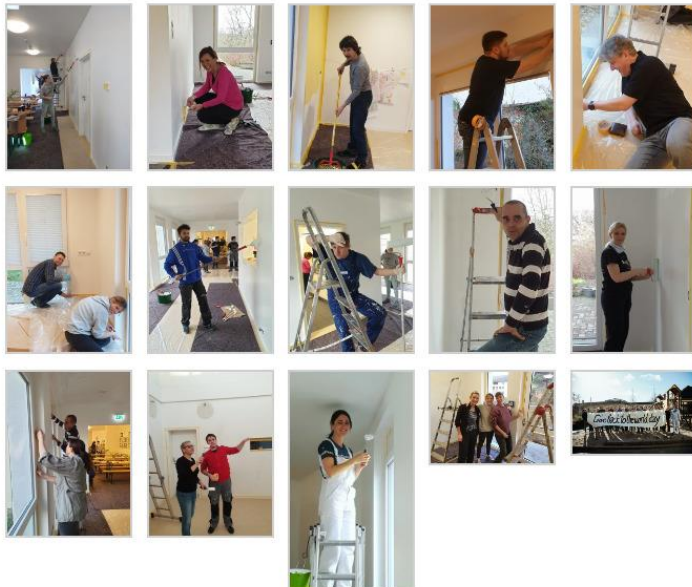
Our ambitious 'Give Back to the World' project in Saarbruecken has kicked off with Phase 1 of a two-phase Corporate Social Responsibility (CSR) event



On February 10, sixteen motivated Software AG employees left their offices at the InnovationCampus Saar to invest their working hours in the much-needed renovation of a daycare center in the neighborhood of our Saarbruecken subsidiary.

The initiative was planned in cooperation with the local working group for volunteer activities, Landesarbeitsgemeinschaft Pro Ehrenamt e.V. (<http://www.pro-ehrenamt.de>), which promotes social involvement of individuals and businesses by organizing a wide range of direct participation projects. We were informed of the need for action at the Lutherhaus daycare center, which is located in the economically disadvantaged district of Saarbruecken-Burbach.

In the first phase of our project, we concentrated on refurbishing the interior of the daycare center and painted the walls of the entrance area, the gym, and the large recreation and dining area. In addition to the manpower, Software AG also donated paint, tools and equipment.



CRISTINA GUELI
Expert, Globalization
MariaCristina.Gueli@softwareag.com



KATHARINA THULL
Senior Globalization Expert
Katharina.Thull@softwareag.com

Saarbrücken Challenge – Teil 1

Der Startschuss für unsere groß angelegte, zweiteilige Saarbrücker "Give Back to the...>>

The second phase is planned for the end of March. Here we will focus on the outdoor areas of the daycare center, repairing sandboxes, refilling them with sand, planting greenery, installing sunshades, etc. About 30 colleagues have already signed up for this phase.

We are glad that our activities have met with such a positive response – not only from our colleagues, but also from the public: Reporters from the local newspaper were on hand at the first event, and representatives of the local authorities will join us for the second one.

The initiative The Saarbruecken Challenge (Die Saarbrücker Herausforderung <https://saarbruecker-herausforderung.de/>) considers our 'Give Back to the World Day' a perfect example of local CSR. And last but not least, a Saarland University student is using our project as input for her bachelor's thesis on 'Forms of Cooperation in CSR Activities'.

We would like to thank all our colleagues who participated in the first phase of our project. We greatly enjoyed working with you in a different work setting, and we are looking forward to Phase 2 of our Saarbruecken Challenge. To be continued...